

THE MSA GROUP - BASE METALS CAPABILITY STATEMENT



INTRODUCTION

The MSA Group has entrenched itself as a trusted and holistic, independent service provider and contractor over the past three decades. The MSA Group's track record is synonymous with quality, integrity and safety compliance.

The MSA Group provides specialist technical services to numerous international and local projects and has worked on five continents in more than 30 countries. The MSA Group's client base includes the largest multi-national mining companies and juniors listed throughout the world.



THE MSA GROUP'S BASE METAL EXPERIENCE

MSA has undertaken multiple base metal exploration and evaluation programmes, from the targeting and initial assessment to the execution and project management of multi-disciplinary programmes, and finally geological and resource modelling phase.

MSA routinely executes internationally compliant resource and reserve estimate statements and has undertaken Competent/Qualified Persons Reports for the purposes of listing on all major mining exchanges.



CLIENTS



The MSA Group's Clients on recent base metal projects include African Rainbow Minerals, Anglo Base Metals, BCL, BHP Billiton, Blackthorn Resources, GP Minerals, Kalahari Minerals, North River Resources, Norilsk Nickel Africa, Tati Nickel, African Copper and Red Crescent Resources.

RECENT PROJECT DETAILS AND LOCATION

The MSA Group routinely supports our client's exploration objectives with the following services:

- Desk top reviews and project assessment, ranking and targeting
- Project planning and project management
- Preparation and implementation of Standard Operating Procedures to ensure compliance
- Placement of project geologists
- Core logging and sampling
- Data interpretation and recommendations
- Resource Estimation
- Independent technical reports (NI 43-101, AIM, JORC, SAMREC)



RECENT PROJECTS

ARGENTINA

2007: Desktop study and prospectivity assessment on porphyry (Cu-Zn-Au) deposits.

2010: Design, implementation and project management of an exploration programme (Cu), including geophysical surveys, diamond drilling sample analysis and QaQc.

2008: Project management, geological and geotechnical logging and sampling of a surface-based diamond drilling programme over massive Ni-sulphide mineralization (Ni-Cu) in the Tuli Block.

BOTSWANA

2005 - 2007: Geological mapping, geochemical till sampling, and core drilling targeting Ni-Cu-PGE deposits in northern Canada.

CANADA

2010: NI 43-101 report (Cu project)

2009: Project management, reconnaissance sampling and mapping of copper properties in the Central African copperbelt, Katanga Province, DRC.

2007 - 2008: Project management and geological and geotechnical core logging on various Cu-Co projects in Katanga Province.

DRC

2008: Competent Persons Report (NI43-101), QAQC, geological modeling and resource estimation on three VMS deposits.

ERITREA

2008: Competent Persons Report including resource verification covering base metal (Cu-Co-Ag and Pb-Zn) and gold assets in Namibia for a reverse AIM listing.

2009: Project Management and geological/ geotechnical logging of in pit diamond drilling program on a Zn mine.

2009: Competent Persons Report including resource verification covering base metal (Cu-Co-Ag and Pb-Zn) and gold assets in Namibia for a reverse AIM listing.

NAMIBIA

2008: Evaluation of base metal (Cu) and Ag assets in east-central Namibia.

NAMIBIA

2008: Project management, logging and sampling of underground resource extension diamond and R/C drilling programmes at Koperberg (Cu, Ag)

2007: Material change report to the AIM on base metal (Cu-Pb-Zn) and Ag assets.

2008: Project and technical management of an evaluation drilling programme over a Ag-Pb-Zn deposit in Northwest Province.

2008: Project and technical management of an evaluation drilling programme over a Cu-Sn deposit in Limpopo Province.

2008: Project and technical management of an evaluation drilling programme over a Sn deposit in Limpopo Province.

2008: Project management, logging and sampling of an underground resource extension diamond drilling programme at the Black Mountain Mine (Cu-Pb-Zn) in the Northern Cape Province.

2008: Project management, geological and geotechnical logging and sampling of a surface-based resource extension diamond drilling programme on the Nkomati Mine (Ni-Cr-Cu-PGE) in Mpumalanga Province.

2008: Technical Review of Exploration carried out over Ni-Cu sulphide prospect in Western Cape Province.

2008: Technical Review and field validation of several Ni-Cu prospects in Western and Northern Cape Provinces.

SOUTH AFRICA

2009 - 2010: Desktop targeting assessment of the base metal (Zn and Cu) potential in NE Turkey. Execution and management of major Zn-oxide exploration programme, including Qualified Person signoff of exploration programme.

TURKEY

2007 - 2009: Camp establishment, project management and Competent Person's sign-off (JORC) of a phase II drilling programme on an IOCG project.

2008: Design and implementation of geological sampling Standard Operating Procedures at the Munali Mine (Ni-Cu-PGE)

2006: Study on the shallow resource potential of several Cu-Co deposits on the Copperbelt.

2006: Resource/Reserve review of the Lumwana copper project.

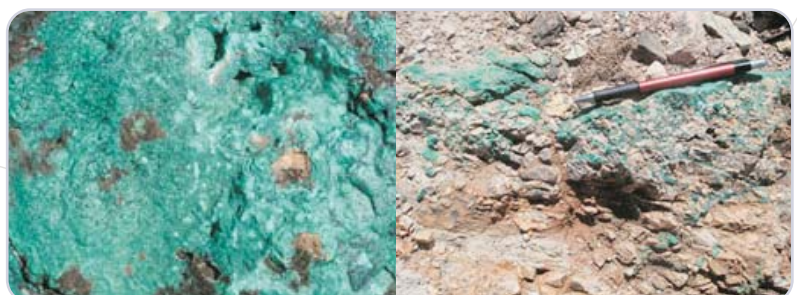
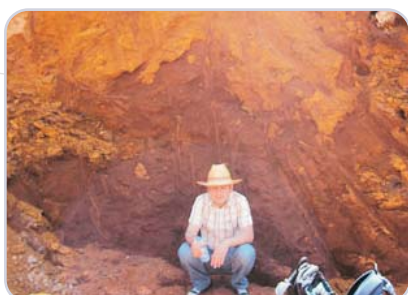
2005: Audit report on the geology and mineral resources of the Lumwana Cu-Ag-U deposit.

2005: Soil geochemical sampling programme targeting IOCG deposits in central Zambia.

ZAMBIA

2008: Interpretation of airborne and ground geophysical, and soil geochemical data to identify drill targets. Project management, logging and sampling of diamond drilling programme. Geological and resource modeling of drill and drill sample data over the Dukwe deposit (Mowana Mine; Cu-Pb-Zn-Ag-Ni-PGE) in the Shashi Mobile Belt.

ZIMBABWE





SUMMARY OF RELEVANT EXPERTISE

Richard Wadley - BSc (Hons), MSc, Pr.Sci.Nat, FGSSA and FSAIMM.

Richard has over thirty years experience in the mining industry, including several years spent in comprehensive exploration programme management in offices remote from corporate centres. He is experienced in the fields of mineral economics analysis and the marketing of both services to the mining industry and of commodities to industrial consumers and new business developments.

Richard has compiled numerous marketing strategies which have lead to the formulation of corporate growth strategies in the mining sector. He has been accountable for compiling, managing and leading teams responsible for the identification of new projects giving effect to corporate growth strategies.

Richard has been a representative on numerous public company boards both in South Africa and Australia, and has participated in new company formations, the creation of governance frameworks and the evaluation of the economic merits of a large number of diverse project proposals. Richard has participated in the selection of optimal suites of projects, in the presentation of company results and of corporate philosophy to many groups of local and international investors and has also assumed an editorial role in annual reports and other report compilations. Early in his career, Richard was involved in various early stage base metal exploration projects in southern Africa, before going on to manage the base metal exploration, marketing and business development portfolios, first at JCI and later at Kumba Resources.

Mike Robertson - BSc, MSc, Pr.Sci.Nat, MGSSA, MSAIMM, MSEG.

Mike has over twenty years of experience in mineral exploration. His experience covers the planning, execution and management of geological mapping programmes, geochemical sampling surveys, geophysical surveys, and drilling programmes encompassing core logging, sampling, evaluation as well as assay quality control and quality assurance, with an emphasis on compliance with various reporting codes. His consulting experience includes property reviews, exploration programme audits, due diligence audits, and independent technical and listing reports for base metal projects worldwide. Mike has a particular interest in the application of applied structural geology to understanding controls on ore genesis.

Mike Venter - BSc (Hons), Pr.Sci.Nat, MGGSA and MSEG.

Mike has more than fifteen years experience, including the planning and implementation of uranium, precious, base, industrial minerals and precious stone exploration projects in Sub-Saharan Africa. Specific project experience involving the design, implementation and management of Ni-Cu-PGM exploration projects in Tanzania, Botswana and Zambia, management of Pb-Zn-Cu VMS and Zn Oxide drilling programmes in South Africa and Namibia and the design of geochemical and geophysical (airborne and ground) surveys on a project specific as well as regional scale.

His consulting experiences includes commodity research and assessments, target generation and project start up, Competent Person Reporting, due diligence and listing reports for ASX and AIM. Mike's base metals experience includes Competent Person Reporting over sediment hosted Cu-Co-Ag projects and Pb-Zn SEDEX projects in Namibia, target generation, and reporting to relevant Government Departments and Joint Venture partners.

Mike Hall – BSc (Hons), MBA, MGSSA and MAusIMM.

Mike has over twenty-nine years' experience in project exploration design, management and operation in a broad variety of mineral deposit types. This includes fifteen years experience on mineral resource estimation, statutory reporting on exploration results and resource reporting to NI 43-101, JORC and SAMREC codes. He has expertise in 3D orebody modelling and resource evaluation using Datamine and Vulcan software, as well as Whittle 4D/4X open-pit optimisation.

In addition, The MSA group can draw on a number of experienced project geologists with experience of managing a variety of sampling and geophysical surveys, as well as R/C, RAB and core drilling programmes.